

DOCTOR-PATIENT CONNECTIVITY

SATELLITE COMMUNICATION FOR THE HEALTHCARE INDUSTRY

Internationally, the quality of healthcare has steadily improved over the last few decades. New techniques and pharmaceutical research have seen diagnoses skyrocket and services expand, placing high demand on doctors, nurses and other healthcare professionals.

Where the quality of modern healthcare has created a surge in demand, modern technology is beginning to provide a solution. Telemedicine and Telehealth are gaining traction wherever they can be applied and are seen as huge advantages for every party involved.

The benefits of telecommunications in healthcare are most significant in rural areas, where doctors cover a number of villages, or hospitals are too far away. It's also becoming commonplace for older people to choose remote locations for rest instead of expensive city centres. Often these rural locations lack the required broadband infrastructure.

Eutelsat Broadband - with the KA-SAT satellite - provides broadband connectivity at a competitive price-point to any location across Europe, parts of North Africa and the Middle East. This is achieved through KA-SAT's future-proof technology, which provides high throughput bandwidth to an extensive list of remote locations.

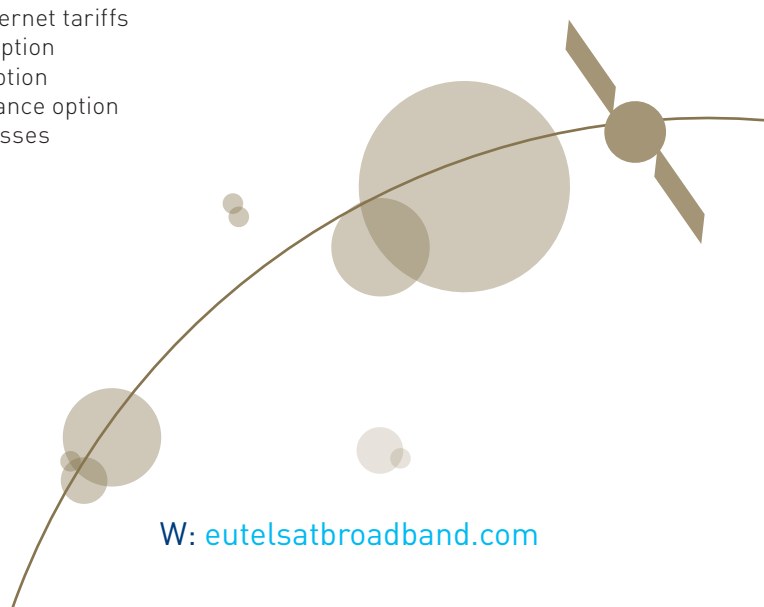
Eutelsat Broadband provides tariffs and terminal solutions to suit the needs of remote hospitals, nursing homes and surgeries, almost independent from the capacity required.

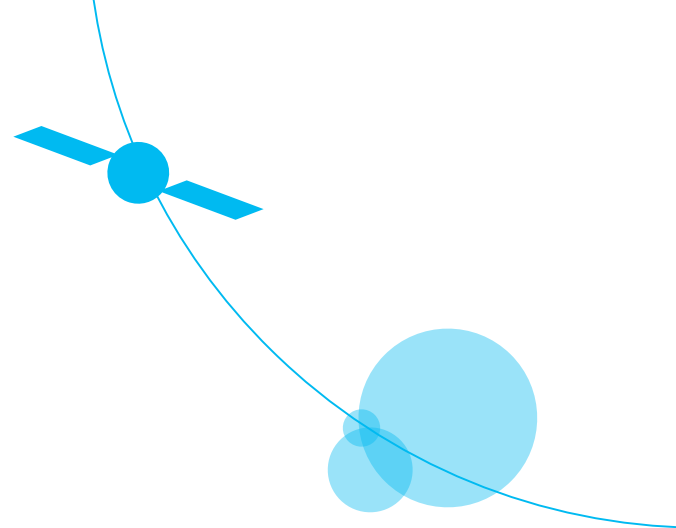
KEY ADVANTAGES

- Affordable, high performance and reliable service
- Speeds up to 22 Mbps
- Availability across Europe, parts of North Africa and the Middle East
- Low cost satellite terminals
- No need for investment into own infrastructure
- Standard or Ad-hoc deployments

KA-SAT offers rural communities:

- Bi-directional IP-traffic
- TCP/IP and UDP/IP support
- Dedicated or best-effort bandwidth
- Connection to Eutelsat Broadband fully redundant fibre-ring and Internet POP's
- Broadband Internet tariffs
- Voice over IP option
- IP multicast option
- Video Surveillance option
- Fixed IP addresses





USAGE SCENARIO

KA-SAT provides rural areas with data-communication capabilities customary in built up urban areas. Telemedicine and Telehealth require the transmission of data, voice and video simultaneously for patient diagnosis. Under these very sensitive circumstances, the better the quality of the data, the better the diagnosis. KA-SAT offers a highly consistent, quality service across Europe, parts of North Africa and the Middle East.

KA-SAT allows high peak rate traffic (e.g. for a live video) and data transfer (e.g. the patients heart beat or blood pressure) simultaneously with dedicated bandwidth.

Eutelsat Broadband offers the following advantages:

- 100 % coverage across Europe, parts of North Africa and the Middle East
- Available immediately
- Cost-effective due to usage of existing network infrastructure
- Solution is based on Eutelsat KA-SAT high throughput satellite
- Offers flat rate for telephony and also optimal for IPTV
- Future-proof due to scalability (up to 50 Mbps)
- Very low infrastructure work needed
- Latest VDSL technology
- No construction work needed

ADVANCED TERMINAL

- Metal box IDU
- 77cm/3W or 120cm/4W ODU
- Dual processor
- Layer 2/3 capability
- 45W electrical power usage

