

READY TO BUILD

HIGH THROUGHPUT SATELLITE CONNECTIVITY FOR THE CONSTRUCTION INDUSTRY

The modern construction industry is becoming increasingly reliant on data communication. It's imperative to allow quick and easy communication between all involved parties – from the architect, through to construction professionals and civil engineers. Our broadband service can provide a seamless WAN infrastructure from the start to the conclusion of a project.

With **KA-SAT** - Europe's first High Throughput Satellite - Eutelsat Broadband provides seamless wireless broadband at a competitive price point at any location across Europe, parts of North Africa and the Middle East. This is achieved through **KA-SAT**'s future-proof technology.

Eutelsat Broadband provide tariffs and terminal solutions that meet the demands of the construction industry. When work begins on a new site, our IT system – which offers

standard IT interfaces to the entire site infrastructure - can be up and running in less than 30 minutes.

The high bandwidth allows large data-transfer, use of standard office software applications or even remote terminal implementations such as CITRIX.

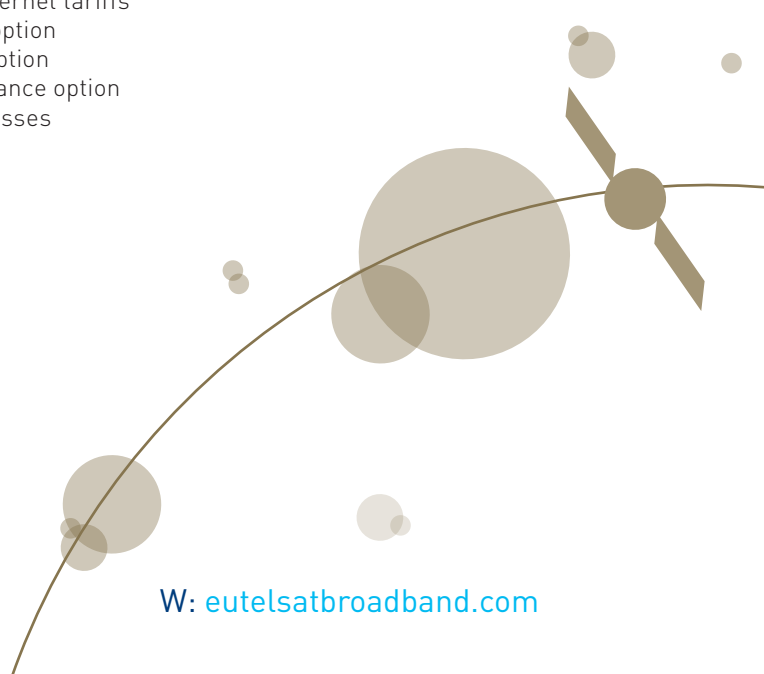
In addition, Eutelsat Broadband is a proven provider of remote video surveillance solutions that can be used to secure locations against unauthorized access and theft.

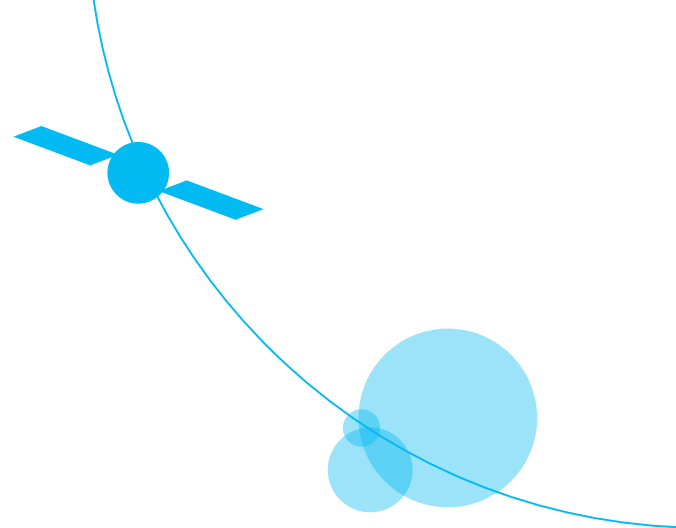
KEY ADVANTAGES

- Affordable, high performance and reliable service
- Speeds up to 22 Mbps
- Availability across Europe, parts of North Africa and the Middle East
- Low cost satellite terminals
- No need for investment into own infrastructure
- Standard or Ad-hoc deployments

KA-SAT offers the construction industry:

- Bi-directional IP-traffic
- TCP/IP and UDP/IP support
- Dedicated or best-effort bandwidth
- Connection to Eutelsat Broadband fully redundant fibre-ring and Internet POP's
- Broadband internet tariffs
- Voice over IP option
- IP multicast option
- Video Surveillance option
- Fixed IP addresses





REFERENCES



USAGE SCENARIO

Many construction companies make use of the capabilities of KA-SAT in their daily operations. They usually operate a set of terminal solutions, which are activated based on the required throughput per site.

With the Eutelsat Broadband installer network, installation can be executed on a ad-hoc basis as relocation of the terminals can be quickly organised through Eutelsat Broadband's OSS web portal.

Once installed, the system remains operational at any time until it is demounted in preparation for the next site.

Since the system operates standard TCP/IP over the Ethernet link, any standard IT infrastructure can be easily connected. The advanced modem also provides

the option to assign up to 4 static IP-addresses, which support specific functions onsite, such as the connection of video cameras.

The **KA-SAT** solution can also act as a back-up if the regular terrestrial connection has been established during the work ongoing. Any loss of connectivity is prevented if the new connection gets damaged for any reason.

ADVANCED MODEM

- Metal box IDU
- 77cm/3W or 120cm/4W ODU
- Dual processor
- Layer 2/3 capability
- 45W electrical power usage

